



GMT MONTHLY MEMBERSHIP PROGRESS REPORT

Results as of: 5/31/2025

Multiple District 11

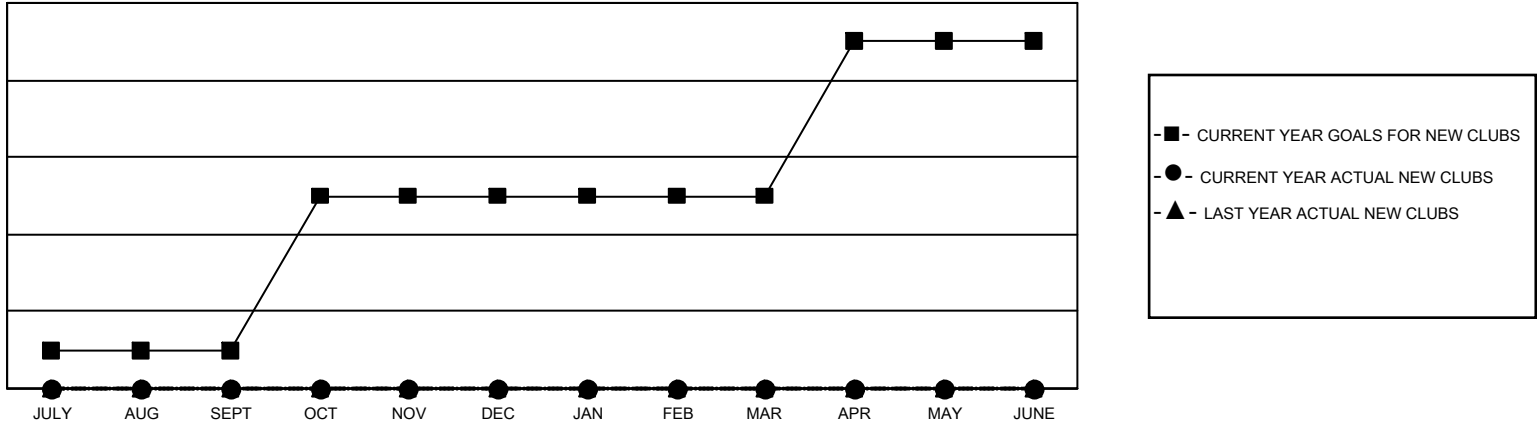
LOCATION: MICHIGAN

GMT: OPEN

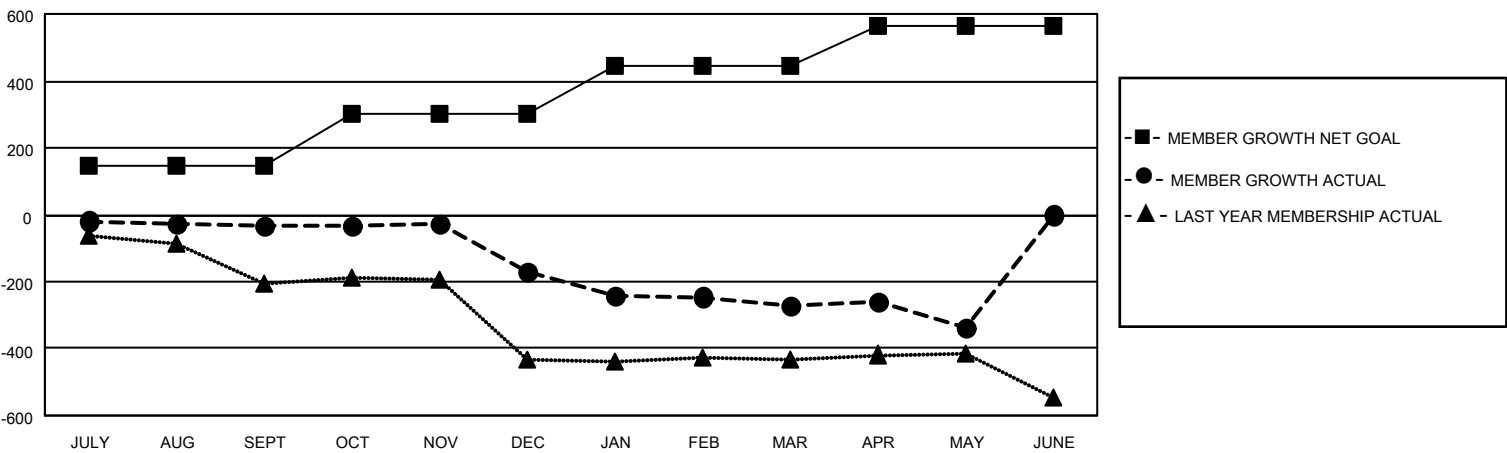
GMT CA 1

Clubs				Members			
RESULTS FOR 2024-2025				RESULTS FOR 2024-2025			
QUARTER	NEW CLUB GOAL	NEW CLUBS	DROPPED CLUBS	QUARTER	MEMBER GROWTH NET GOAL	MEMBER GROWTH ACTUAL	DROPPED MEMBERS ACTUAL (including transfers)
JULY/AUG/SEPT	1	0	1	JULY/AUG/SEPT	144	185	202
OCT/NOV/DEC	4	0	2	OCT/NOV/DEC	156	208	310
JAN/FEB/MAR	0	0	3	JAN/FEB/MAR	143	205	245
APR/MAY/JUNE	4	0	1	APR/MAY/JUNE	119	128	174

GOALS AND ACTUAL NEW CLUBS CUMULATIVE



GOALS AND ACTUAL MEMBERS CUMULATIVE



DROPPED CLUBS: 7

177 CLUBS OF 334 ADDED 1 OR MORE NEW MEMBERS

GENDER DISTRIBUTION

MALE 5,402 (63.74%)
FEMALE 3,073 (36.26%)

DROPPED MEMBERS

DECEASED 168
CLUB CANCELLED 23
OTHER 734
TOTAL 925

[CLICK HERE FOR CUMULATIVE MEMBERSHIP DATA](#)

TOTAL FAMILY UNIT MEMBERS 1,713
FAMILY MEMBERS PAYING HALF DUES 875